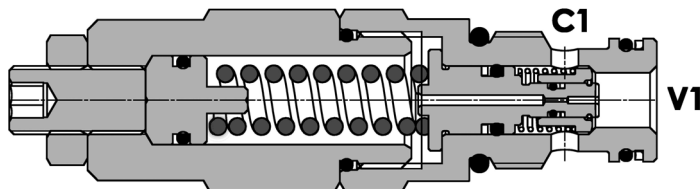
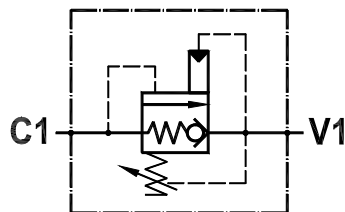




**Valvola di sequenza ad area differenziale con ritorno libero, a cartuccia**  
**Differential piston sequence valve, free reverse flow, cartridge version**

Rev.02-2010/08

**SPECIFICHE TECNICHE**

**Materiali:** cartuccia in acciaio zincato, parti interne in acciaio trattato termicamente.

**Portata:** 25 l/min

**Taratura max.:** 350 bar

**Pressione max.:** 350 bar

**Regolazione pressione:** mediante vite

**Cavità:** 22205 (vedere sez. X)

**Peso:** 0,250 Kg

**TECHNICAL SPECIFICATIONS**

**Materials:** cartridge in steel zinc plated, internal parts are in hardened steel.

**Rated flow:** 25 l/min

**Max. setting:** 350 bar

**Max. pressure:** 350 bar

**Adjustment means:** leakproof screw

**Cavity:** 22205 (see section X)

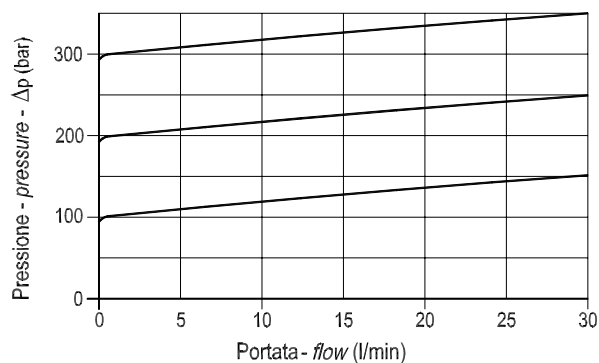
**Weight:** 0,250 Kg

**DIAGRAMMA PERDITE DI CARICO - PRESSURE DROP CURVES**

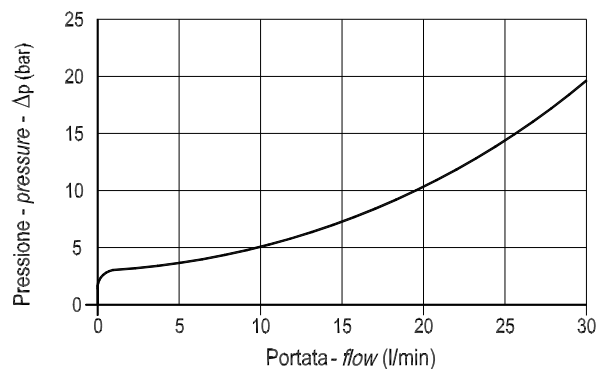
Viscosità olio 24 mm<sup>2</sup>/sec. (3,5 °E)  
 Temperatura 50 °C

Oil viscosity 24 mm<sup>2</sup>/sec. (3,5 °E)  
 Temperature 50 °C

C1 ► V1

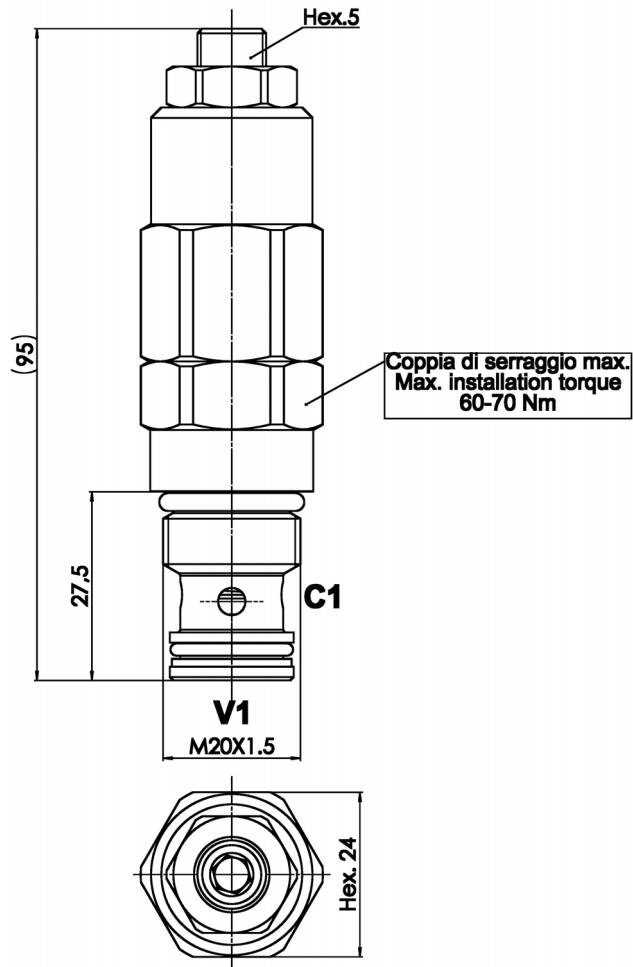


V1 ► C1



**Valvola di sequenza ad area differenziale con ritorno libero, a cartuccia**  
**Differential piston sequence valve, free reverse flow, cartridge version**

Rev.02-2010/08



MOLLE - SPRINGS				*
Codice Code	Campo taratura min.-max. bar Adjustable pressure range bar	Increment. press. bar/giro vite Pressure increase bar/turn	Taratura standard bar Standard setting bar	Colore Color
35	100 - 350	110	100	Rosso Red

**ESEMPIO DI ORDINAZIONE - ORDERING CODE EXAMPLE**

**F P S Q   A   2 5   C   P   3 5**